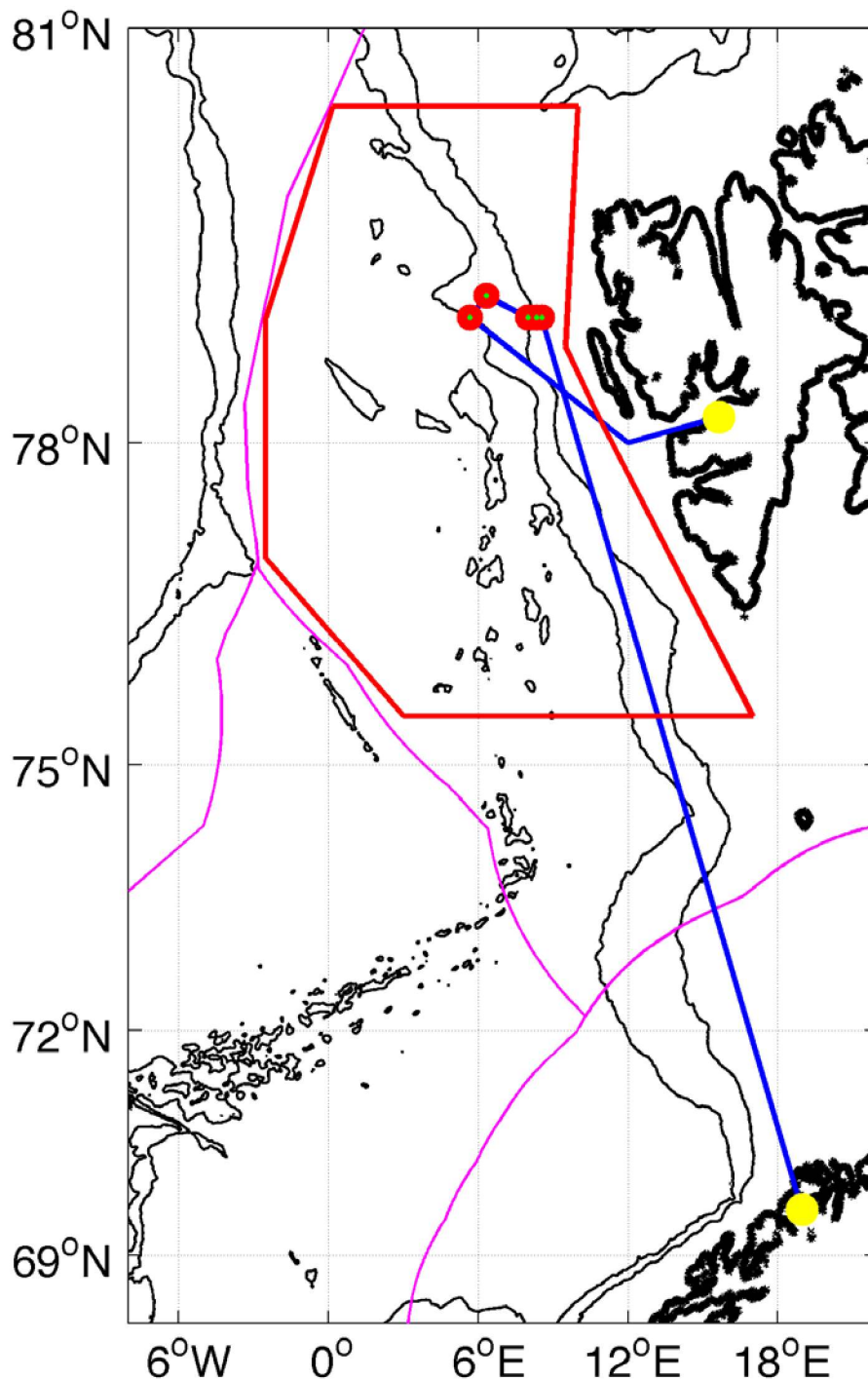


4. ATTACH CHART showing (on an appropriate scale) the geographical area of intended work, positions of intended stations, tracks of survey lines, positions of moored/seabed equipment, areas to be fished  
Areas of planned operations



Intended cruise track (blue) from Tromsø to the mooring recovery/deployment locations (green on red dots; see 6. below for latitude/longitude), to and from Longyearbyen, and in the region of Polygon A (denoted by red polygon) within which the frontal studies (see next figure) will take place. The magenta lines denote the EEZ boundaries.

Polygon A is defined by the following coordinates:

75°30'N 17°00'E  
 78°15'N 10°45'E  
 78°47'N 09°30'E  
 80°30'N 10°00'E  
 80°30'N 00°10'E  
 79°00'N 02°30'W  
 77°00'N 02°30'W  
 75°30'N 03°00'E  
 75°30'N 17°00'E