

## NOTIFICATION OF PROPOSED RESEARCH CRUISE

### 1. PART B: DETAILS

1. NAME OF RESEARCH SHIP 'STAALBAS' CRUISE NO.
2. DATES OF CRUISE From Sep. 20th, 2018 To Oct. 15th, 2018

3. a) PURPOSE OF RESEARCH

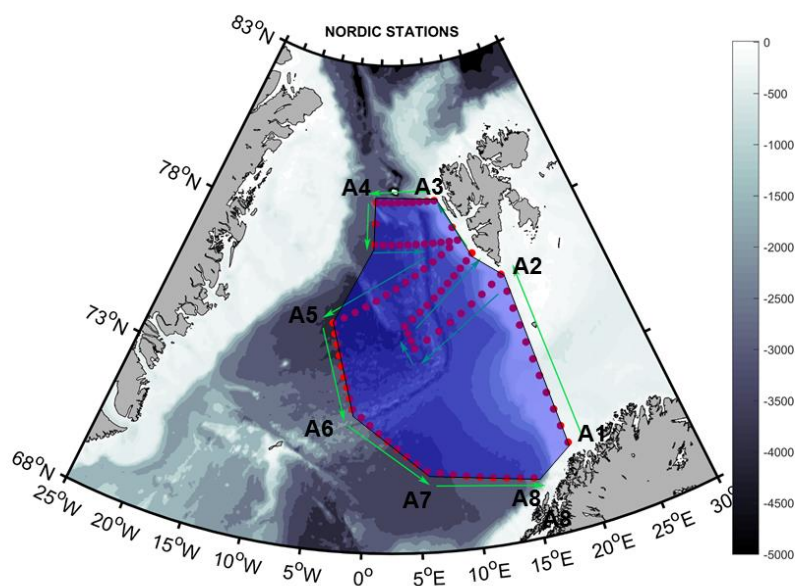
The main purposes of this cruise are concerning about:

- 1) Key modification and transport progresses of Greenland Sea dense waters and its relationship with the recirculated Atlantic Water from north and the Norwegian sea;
- 2) Geostrophic current structure in the Greenland sea and upper ocean circulation scheme;

b) GENERAL OPERATIONAL METHODS (including full description of any fish gear, trawl type, mesh size, etc.)

We are planning to acquire the water physical parameters (include conductivity, temperature, pressure and dissolved oxygen) of water column from the sea surface to 2000 meter deep. In order to achieve this, a winch with 2500 meter long rope and a hydrological equipment named CTD are required. Only waters at the depth of 0m, 50m and 100m are sampled and a plastic sampler will be used.

4. ATTACH CHART showing (on an appropriate scale) the geographical area of intended work, positions of intended stations, tracks of survey lines, positions of moored/seabed equipment, areas to be fished



Scheduled stations (red dots and yellow triangles) of the 2018 cruise in the Greenland sea and the Norwegian sea are shown on the figure above, and the voyage line is made by green arrows.

5. a) TYPES OF SAMPLES REQUIRED (e.g., geological/water/plankton/fish/radionuclide)

water sample.

b) METHODS OF OBTAINING SAMPLES (e.g., dredging/coring/drilling/fishing, etc. When using fishing gear, indicate fish stocks being worked, quantity of each species required, and quantity of fish to be retained on board).

Only waters at three layers (0 m, 50 m and 100m) are sampled and each sample needs about three litres of sea water. A plastic bottle will be deployed to the target layer by a small winch on board.