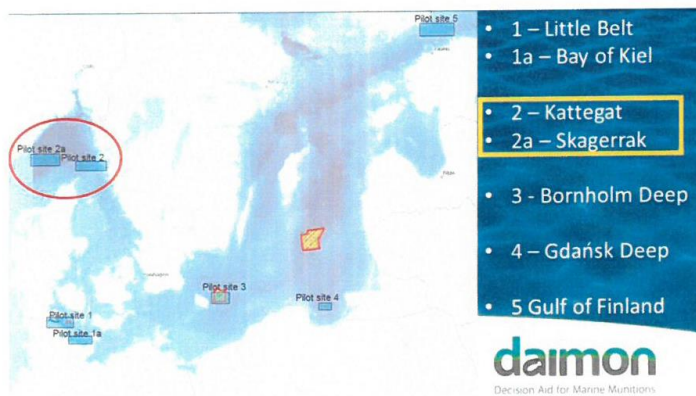


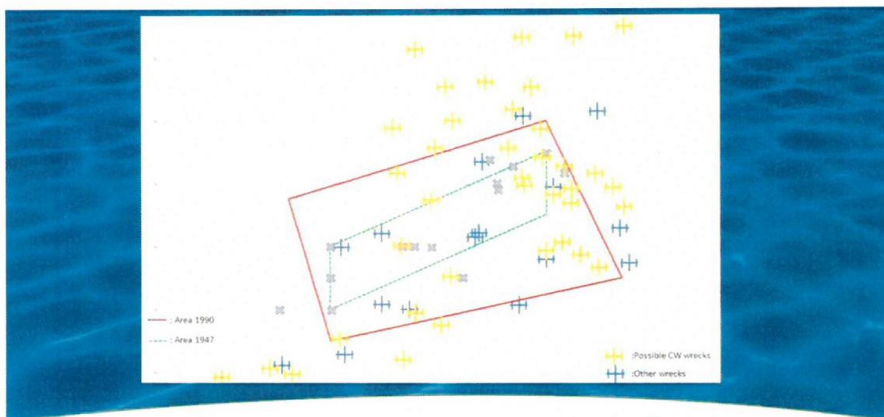
**4. Attach chart showing (on an appropriate scale) the geographical area of the intended work, positions of intended stations, tracks of survey lines, positions of moored /scabbed equipment.**

On the maps copied from papers sent by Norwegian Defence Research Establishment (FFI)

The location of the chemical munitions dump site at the Skagerrak is presented. The main activity will be inside of the square which marks the primary dump site area. SSS pictures wrecks made in 2015.



**No. 3.2 - Case studies on wrecks filled with chemical munitions – Norwegian Defence Research Establishment (FFI)** 11



Dumping area.