

4. CHART

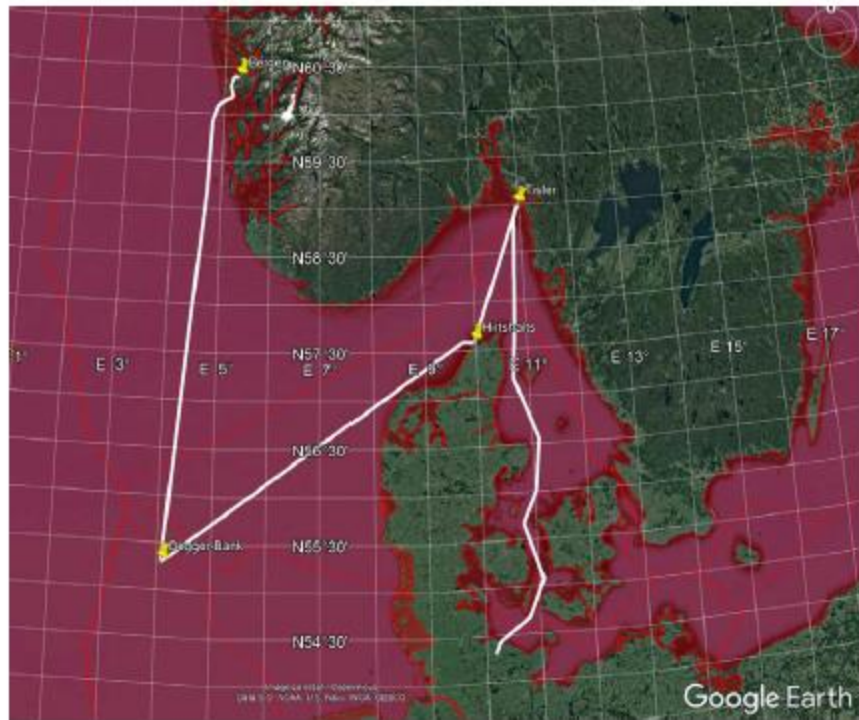


Figure 1: Cruise track of cruise POSS26 with start in Bergen, studies at the Dogger Bank Seep in the Dutch EEZ and transiting via Hirtshals (Denmark to the Tisler Reef area).

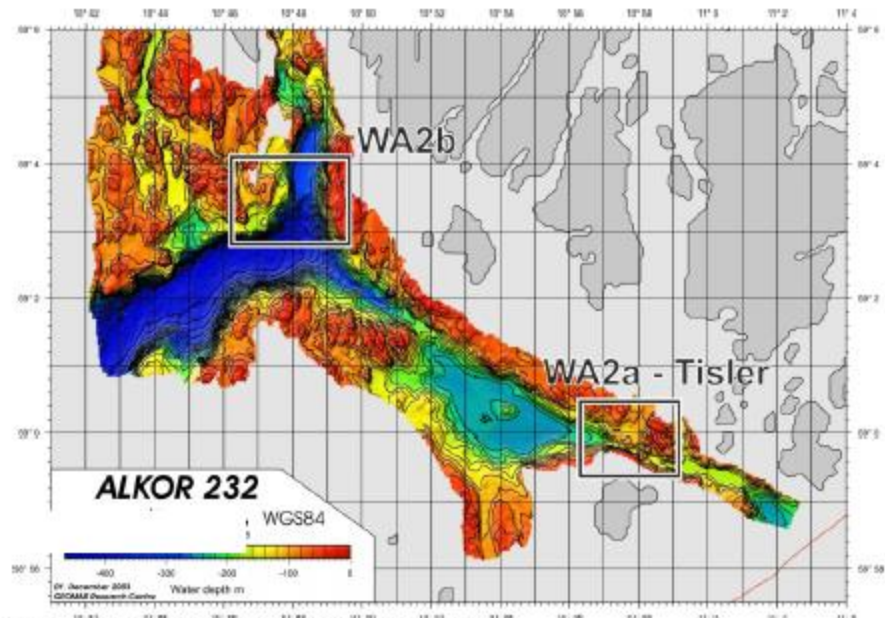


Figure 2: Overview map of the WA2 Tisler working area.

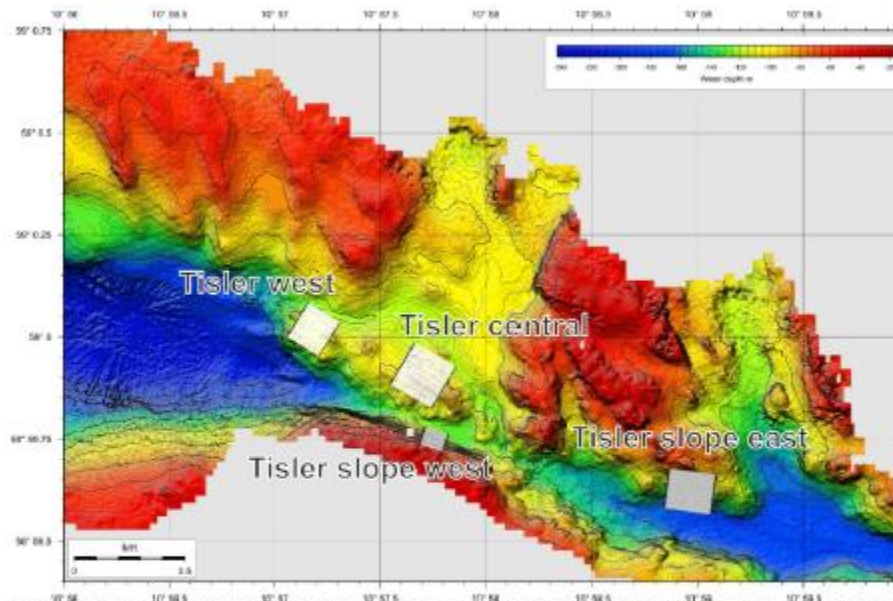


Figure 3: Four AUV mapping areas (white squares) at the Tisler reef and slope areas in WA2a.

The submersible will dive at various points at the Tisler Reef. The dive location in the WA2a area of the diving will be at the steep northern flank of the Oslo Trough and the shallower parts in about 120m at the SW area of the WA2b area. Based on those investigations more detailed AUV dives will be planned in that area.