

4. ATTACH CHART showing (on an appropriate scale) the geographical area of the intended work, positions of intended stations, tracks of survey lines, positions of moored / seabed equipment, areas to be fished:

1)

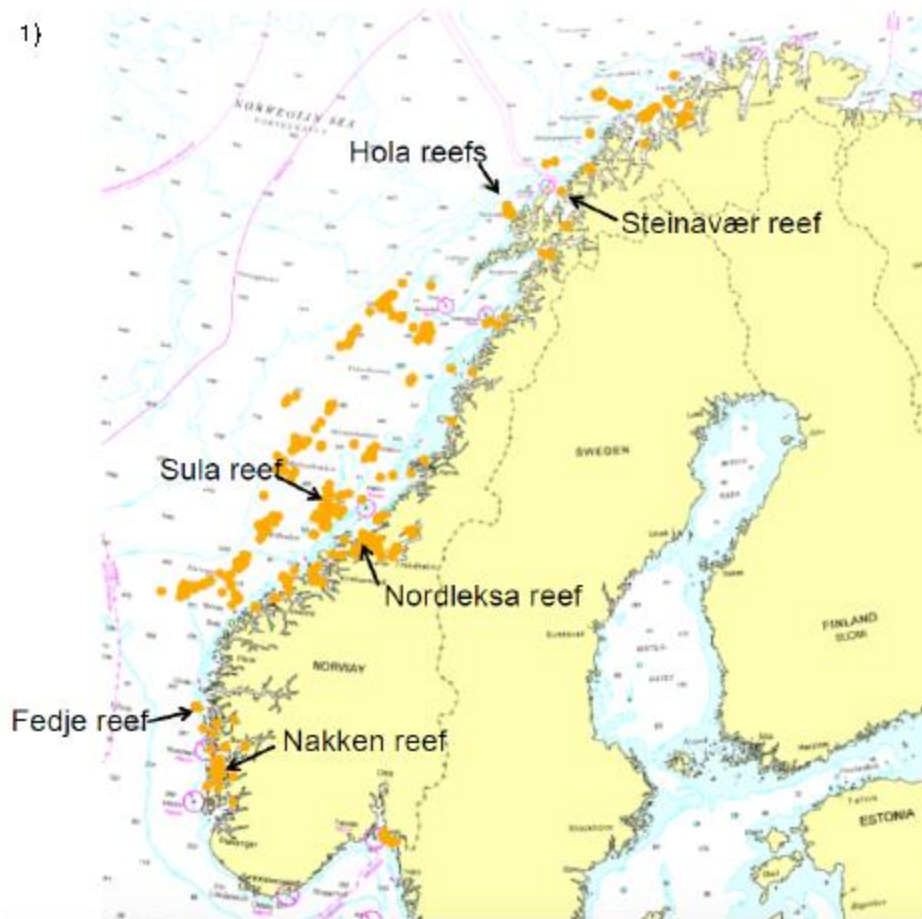


Fig. 2 Map of Norway displaying an overview of all six stations of the POS525 cruise with RV POSEIDON along the Norwegian coasts and margins.

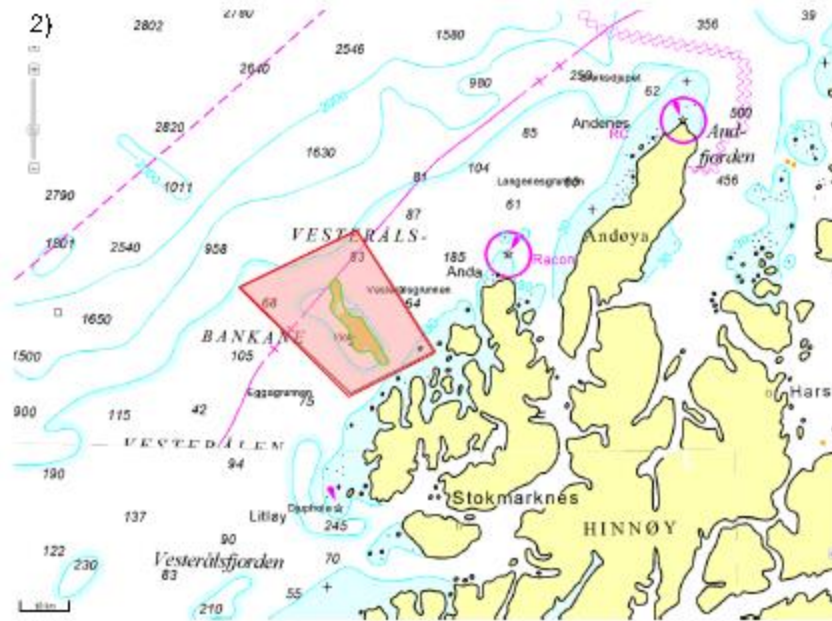


Fig. 3 Data ech maps of Station I area: Ho reefs in northern Norway off the coasts. The red rectangle shows the working area of station I (see coordinates in table under A(2)).

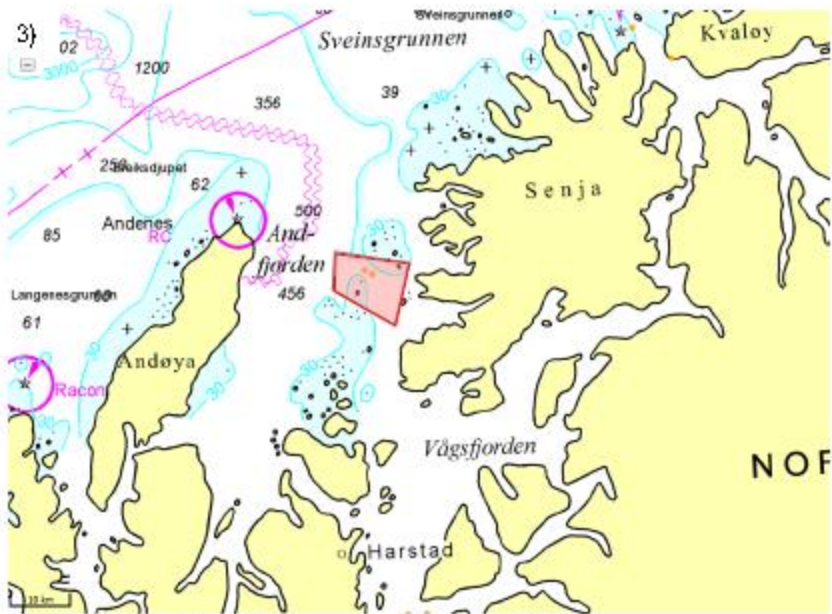


Fig. 4 Data ech maps of Station II area: the coastal Steinvær reef, the northern most Norwegian coral reef station proposed for this cruise. The red rectangle shows the working area of station II (see coordinates in table under A(2)).

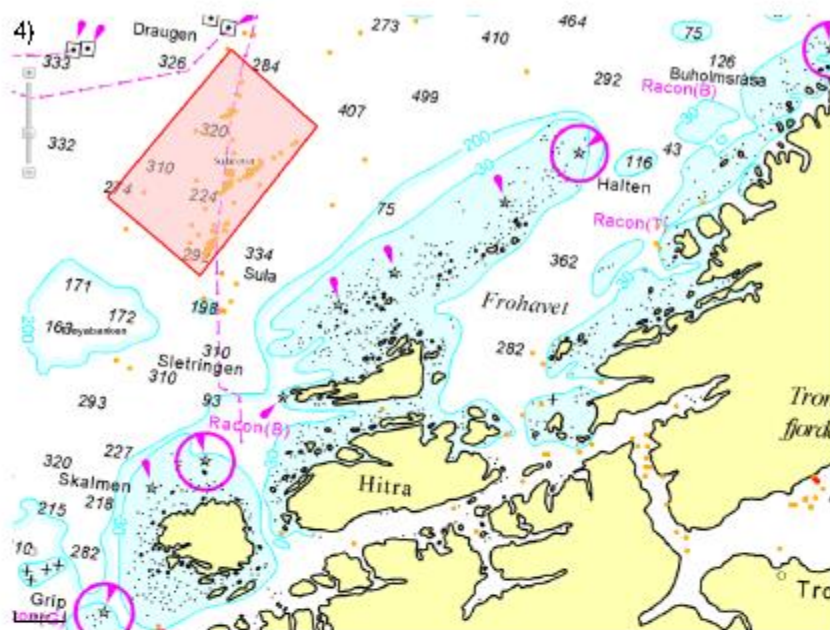


Fig. 5 Detailed map of Station III area: The offshore Sula Reef Complex at the continental shelf in the Norwegian Sea. The red rectangle shows the working area of station III (see coordinates in table Under A(2)).

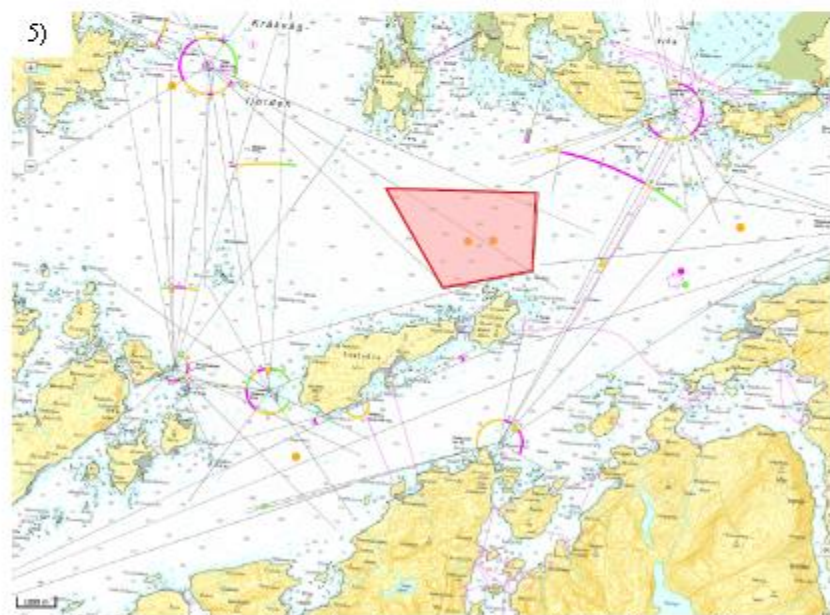


Fig. 6 Detailed map of Station IV area: The Nord area reef area in the outer Norwegian shelf in the Norwegian Sea. The red rectangle shows the working area of station IV (see coordinates in table Under A(2)). Note that the scale is sufficient (1:6000m) compared to the previous detailed graphs with 1:100m scale.

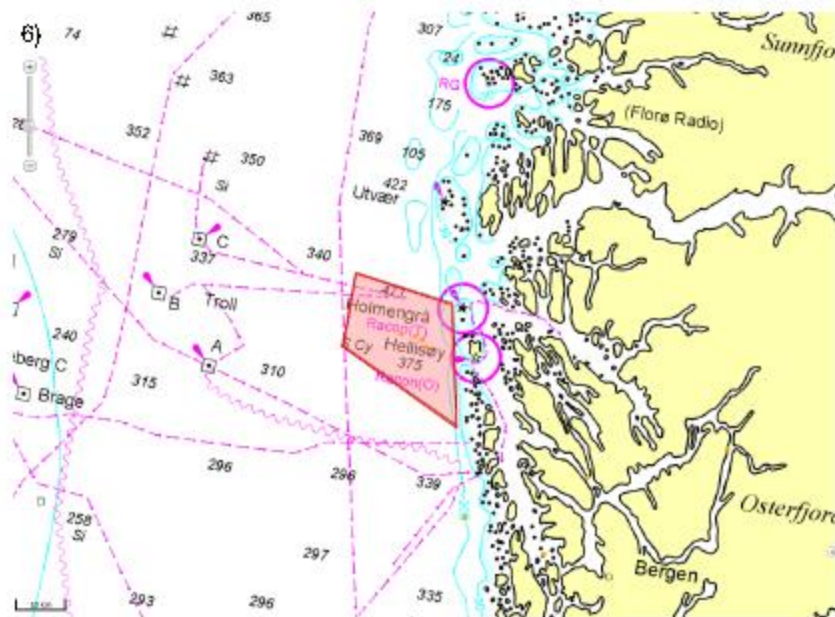


Fig. 7 Data echos of Stator V area: The hede reefs off the island "Hede" at the southern boundary of the Norwegian Sea. The red rectangle shows the working area of stator V (see coordinates in table Under A/2)).



Fig. 8 Data echos of Stator VI area: The Nakker reefs with the fods of Langerøen at southern boundary of the Norwegian Sea. The red rectangle shows the working area of stator V (see coordinates in table Under A/2)).