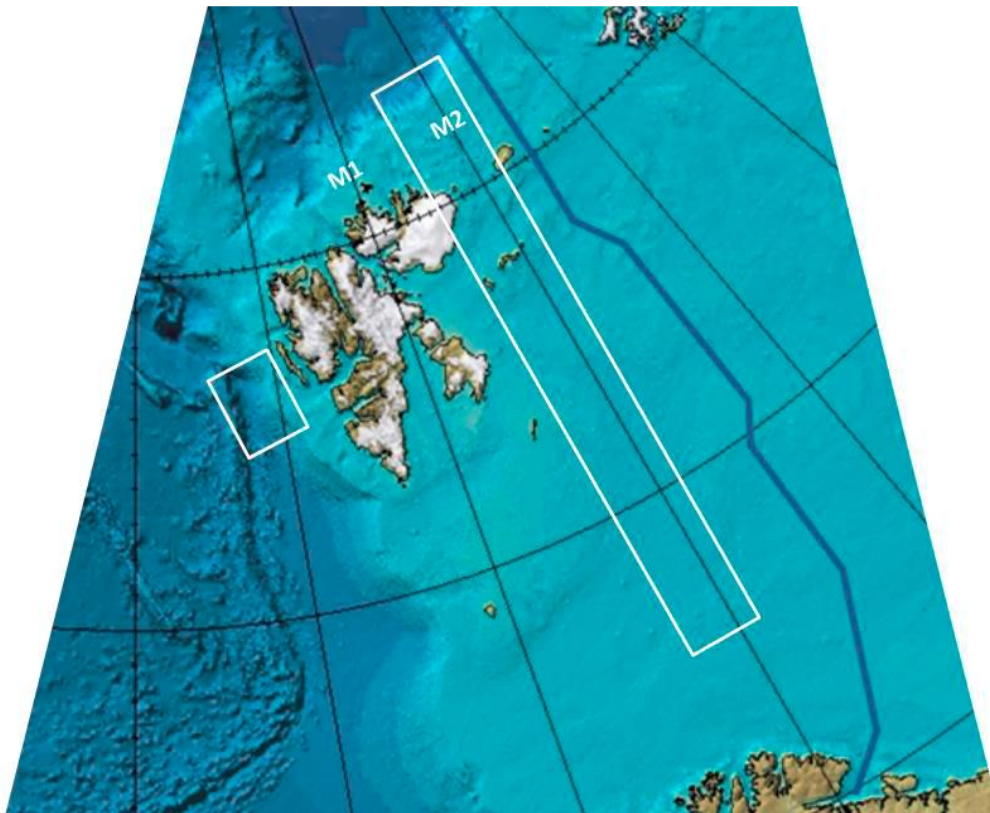


4. ATTACH CHART showing (on an appropriate scale) the geographical area of intended work, positions of intended stations, tracks of survey lines, positions of moored/seabed equipment, areas to be fished



We propose to sample from the ship and operate the AUVs in the area along 30E marked in white. We also plan to take water column samples from the area to the west of Svalbard to obtain "Atlantic Water" properties. UK Moorings are located at positions M1 and M2 as part of a Norwegian program called A-TWAIN operated by Norwegian Polar Institute. Precise sampling locations are highly dependent upon position and condition of the ice edge.

Principal Sampling Stations in the Barents Sea will be

Station Latitude Longitude

B13 74° 30' N 30° E

B14 76° 30' N 30° E

B15 78° 30' N 30° E

B16 80° 6' N 30° E

B17 81° 22' N 30° E

B18 81° 46' N 30° E

Additional stations will be dictated by any ice cover.