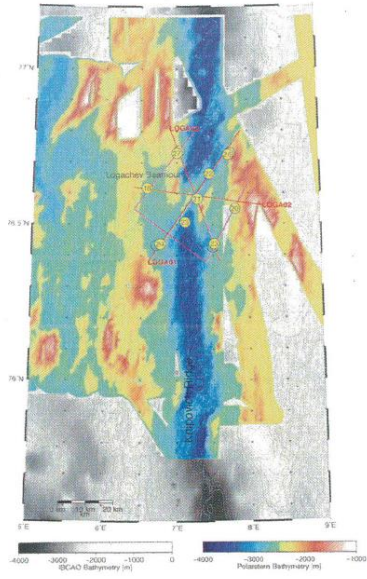


4. ATTACH CHART showing (on an appropriate scale) the geographical area of intended work, positions of intended stations, tracks of survey lines, positions of moored/seabed equipment, areas to be fished



6.60°E 76.38°N	7.90°E 76.80°N	31 nm
6.40°E 76.62°N	8.20°E 76.56°N	25.3 nm
6.90°E 76.81°N	7.60°E 76.38°N	27.6 nm
8.00°E 76.63°N	7.40°E 76.38°N	17.2 nm
7.40°E 76.38°N	6.40°E 76.55°N	17.4 nm
6.40°E 76.55°N	7.25°E 76.80°N	19.0 nm