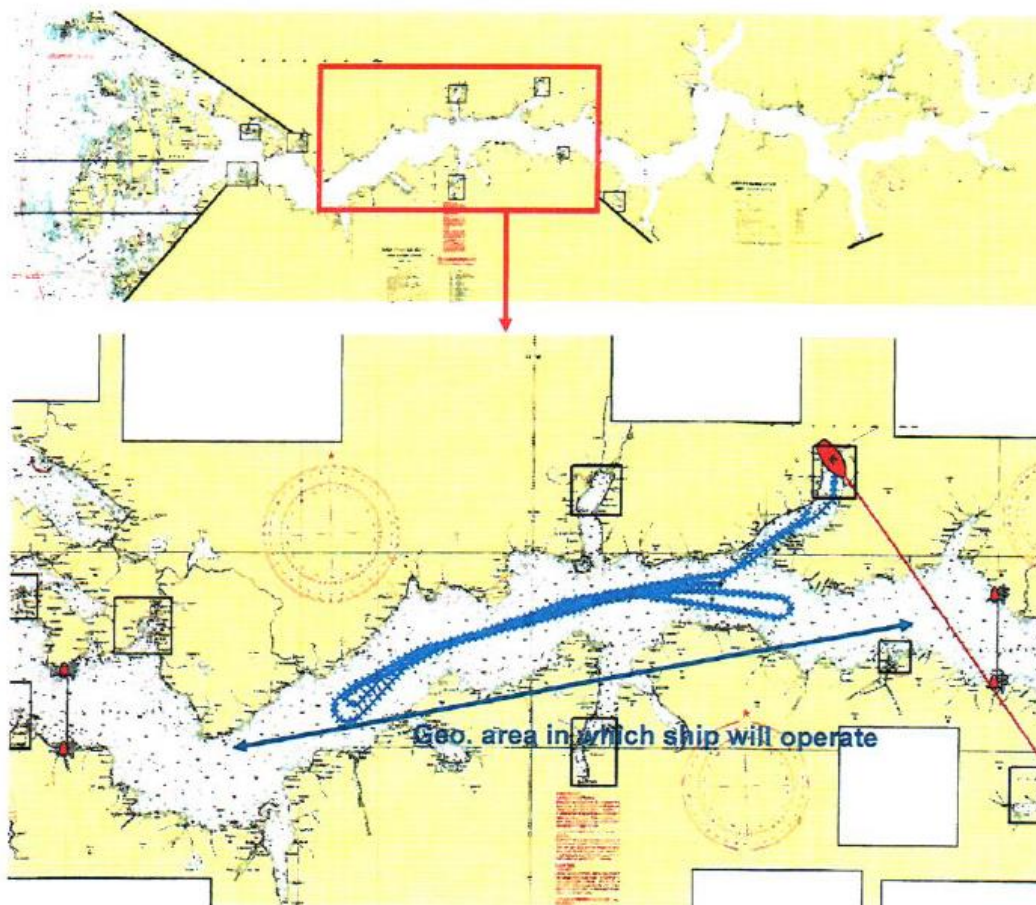


ATTACHMENT I:

Geographical area in which the ship will operate

The charts shown here are identical to those in a request for September 2014 (Cruise No. EMB084). Due to the similarity of towing experiments (not to be confused with the experimental aim) and the acoustic setup (source and receiver) the same area seems optimal suited for the planned calibration cruise as for the cruise planned for September 2014.



Sogne-Fjord and Hoyanger-Fjord