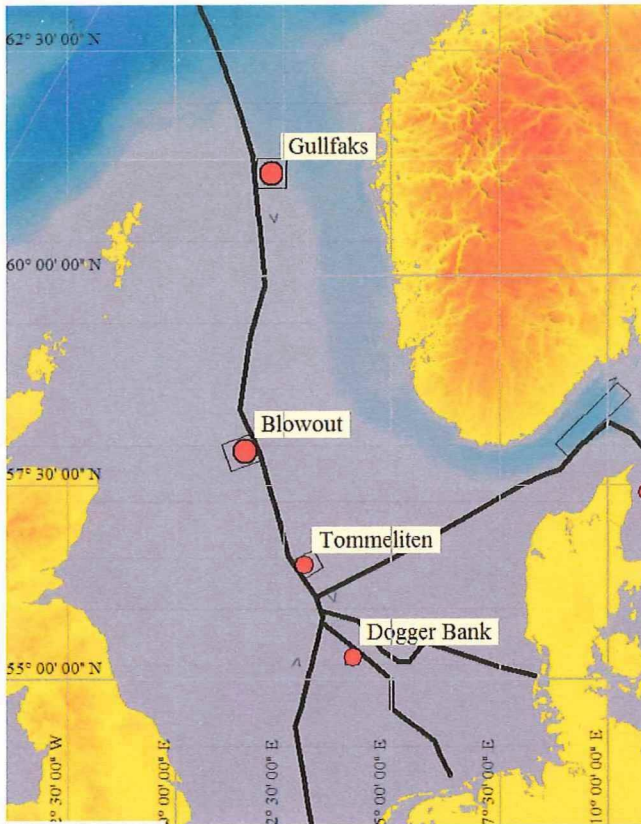


4. ATTACH CHART showing (on an appropriate scale) the geographical area of intended work, positions of intended stations, tracks of survey lines, positions of moored/seabed equipment, areas to be fished



Focus of our activities will be Tommeliten (mean decimal position: 56°29.88'N., 02° 59.80'E) and Gullfaks (mean dec. position 61° 10:45'N. 02°14,5'E).

5. a) TYPES OF SAMPLES REQUIRED (e.g., geological/water/plankton/fish/radionuclide)

Types of samples:

- Geological
- Hydroacoustic
- Water
- Isotopes
- Methane

b) METHODS OF OBTAINING SAMPLES (e.g., dredging/coring/drilling/fishing, etc. When using fishing gear, indicate fish stocks being worked, quantity of each species required, and quantity of fish to be retained on board).

- Coring (1m long)
- Water sampling and lab analyses
- CTD casts
- Hydroacoustic measurements (4-500kHz)
- ROV dives with video footage and gas sampling