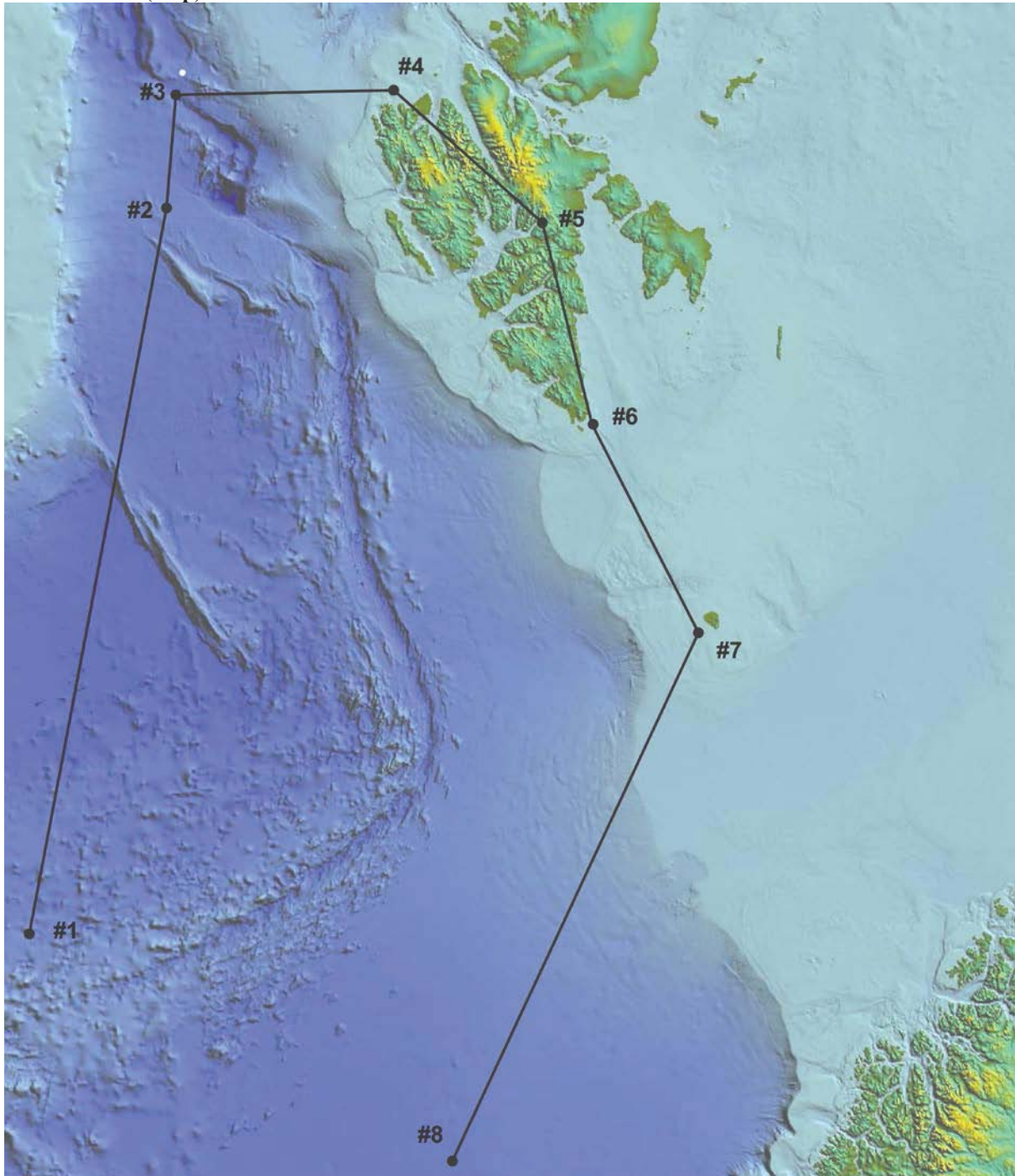


Attachment 1 (map)



Research area requested for RV MARIA S. MERIAN 57 is shown by the black points (lat/long coordinates: #1: 72°27.94'N, 04°04.66'E; #2: 79°00.00'N, 0°00.00'E; #3: 80°00.00'N, 0°00.00'E; #4: 80°00.00'N, 12°00.00'E; #5: 78°25.31'N 17°50.44'E; #6: 76°27.95'N, 17°01.47'E; #7: 74°18.11'N, 18°28.64'E; #8: 69°30.23'N, 05°11.00'E).

Attachment 2: Paper form Tim Freudenthal and Gerold Wefer (2013) Drilling cores on the sea floor with the remote-controlled sea floor drilling rig MeBo