

NOTIFICATION OF PROPOSED RESEARCH CRUISE

1. PART B: DETAILS

1. NAME OF RESEARCH SHIP CRUISE NO.
ALKOR AL447

2. DATES OF CRUISE From 20.10.2014 To 04.11.2014

3. a) PURPOSE OF RESEARCH

Natural Gas Seepage Analyses

b) GENERAL OPERATIONAL METHODS (including full description of any fish gear, trawl type, mesh size, etc.)

Hydroacoustic measurements
Seafloor Video Survey
Coring
Deployment of deep sea monitoring stations

4. ATTACH CHART showing (on an appropriate scale) the geographical area of intended work, positions of intended stations, tracks of survey lines, positions of moored/seabed equipment, areas to be fished

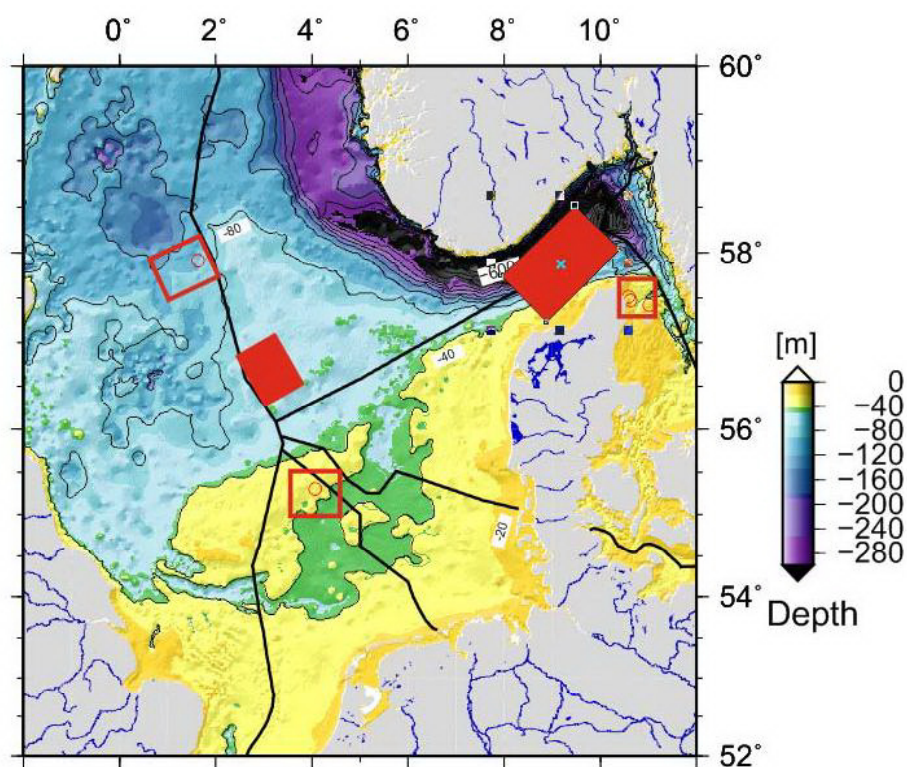


Figure highlighting the planned research areas (red filled rectangles). Precise location surveys and sampling and mooring position have to be adjusted due to the gathered data during the cruise.

5. a) TYPES OF SAMPLES REQUIRED (e.g., geological/water/plankton/fish/radionuclide)
geological, water