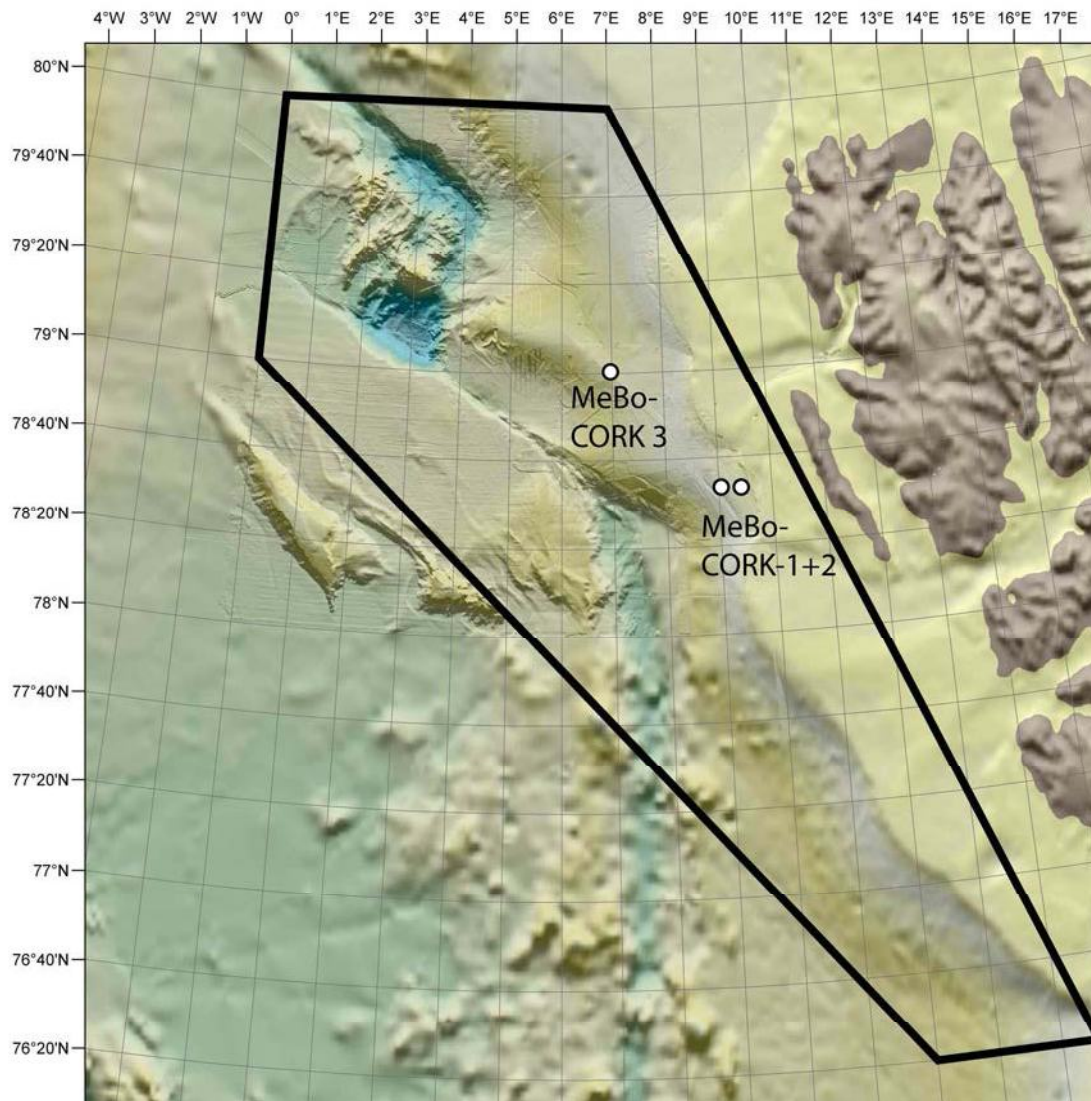


Attachment 1 (map)

Research area requested for RV MARIA S. MERIAN 41 is shown by the black box (lat/long coordinates: 80°N, 0°; 79°N, 0°; 76°20'N, 12°E; 76°20'N, 14°30'E; 80°N, 7°E). MeBo-CORK deployments are planned at three MeBo drill sites MeBoCORKS 1, 2 and 3.

Attachment 2: Paper from Tim Freudenthal and Gerold Wefer (2013) Drilling cores on the sea floor with the remote-controlled sea floor drilling rig MeBo