

„SOLEA“
Cruise 677
REPORT
17.08. – 01.09.2013

Personnel

Name	Institution
Kay Panten	SF
Holger Haslob	SF
Thomas Kehlert	SF
Birger Kreutz	Multimar
Karin Krüger	SF
Constancia Levertz	SF, Trainee
Simon Wieser	SF, Trainee

Objectives

1. Participation in the ICES co-ordinated “International **B**eam **T**rawl **S**urvey” in the North Sea
2. Determination of temperature and salinity in the area of investigation

Narrative (Fig. 1)

FRV “Solea” left the port of Cuxhaven on 17th August. Due to strong westerly winds with forces 7-8 no work could be carried out the next day (18th August). Working started not before the following day at ICES statistical rectangle 39F5 by sampling the offshore stations from South to North. Due to the illness of two crew members a unplanned break was required in the Danish harbor of Hanstholm on 23rd August. On the evening of the 24th FRV “Solea” disembarked the port and the research was continued in the rectangles 43F8 and 43F9 on the next morning. Under very good weather conditions the coastal stations were sampled thereafter from North to South. At noon on the 31st August the final haul of

the survey was conducted. The cruise ended on the same evening in Cuxhaven. The scientific staff returned to Hamburg the next morning.

Results (Fig. 2 – 7)

A total of 63 valid hauls with a standard duration of 30 minutes were made with the 7m beam trawl. Also, at 63 stations salinity and temperature were measured.

The distribution of species composition shows the usual geographic pattern with dab as the most frequent fish species, followed by plaice, lemon sole and grey gurnard.

Towards the North and the West of the investigation area the importance of long rough dab and starry ray in the biomass increases. Here, plaice is only occurring sporadically with some larger (up to 50 cm) individuals.

Especially noticeable this year was the low occurrence of grey gurnard in the offshore rectangles. Furthermore, a high abundance of plaice was found in the coastal rectangles 40F7 and 41F7. In total, 34 fish and 72 invertebrate species were detected on all stations.



Dipl.-Biol. K. Panten

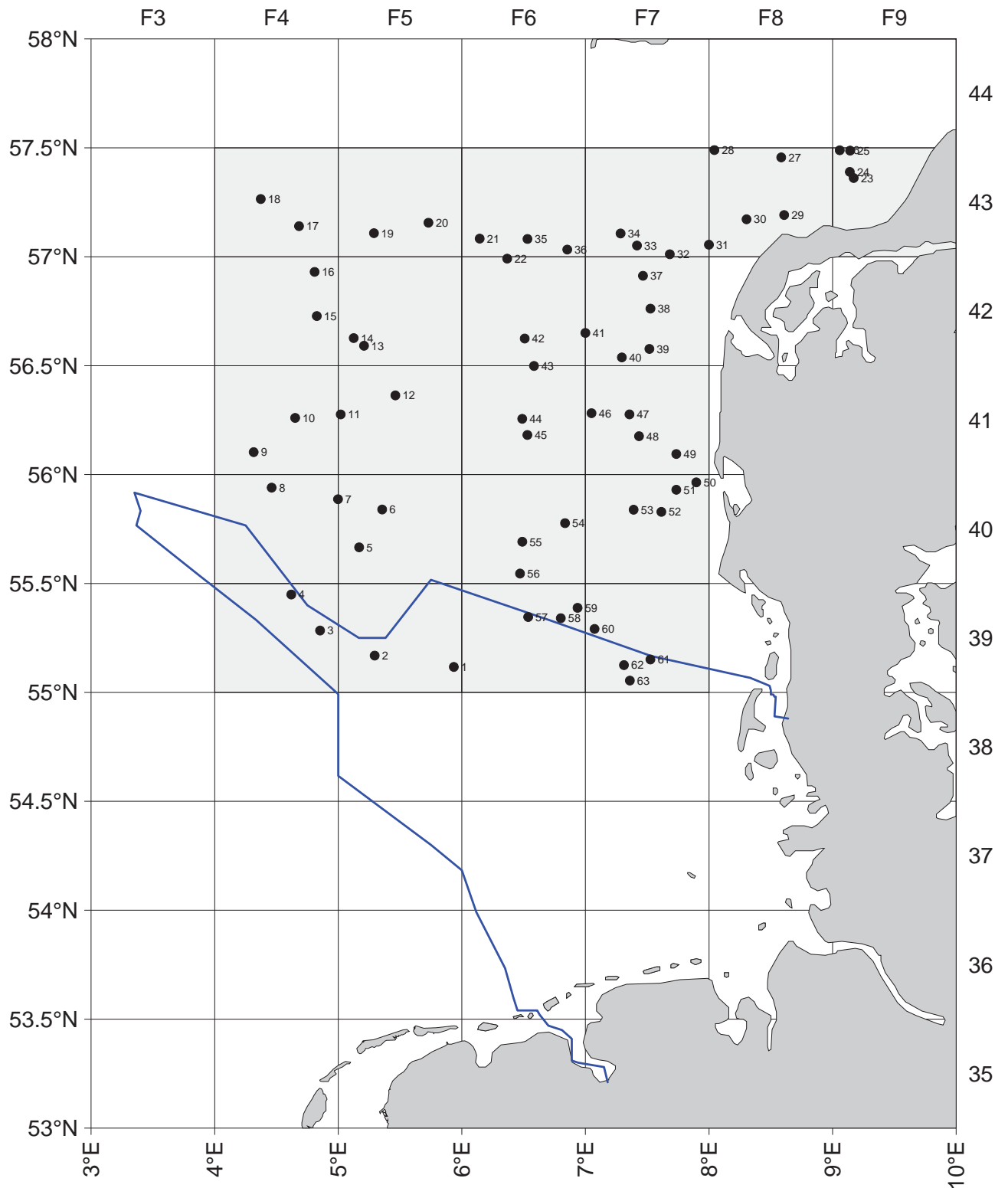


Fig. 1: "Solea", Cruise no. 677 , Haul positions and area of investigation

Catch composition and length distribution during Beam Trawl Survey

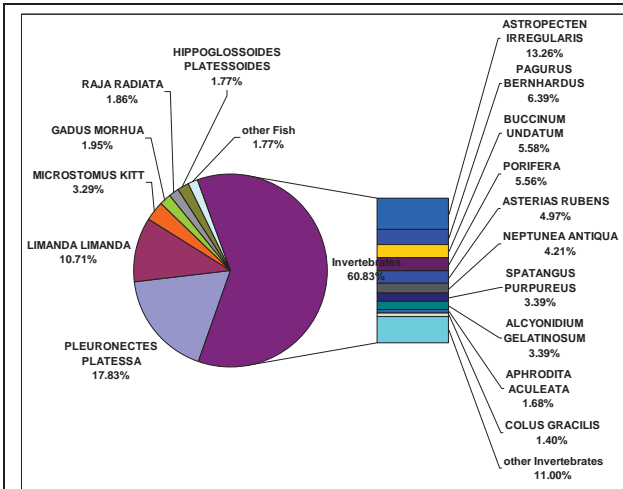


Fig. 2: Catch composition in 39-43F4&5 (offshore)

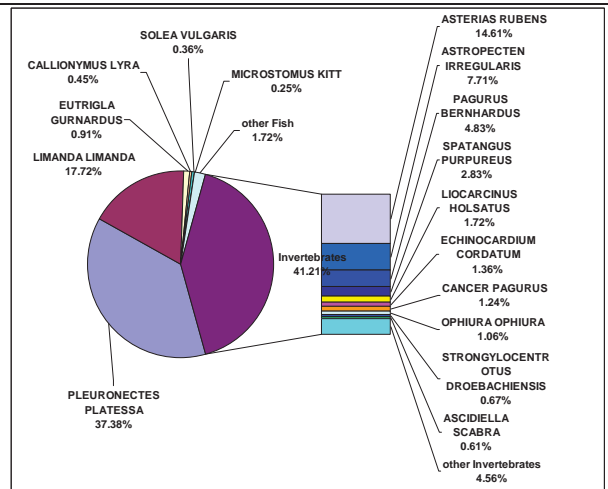


Fig. 3: Catch composition in 39-43F6&7, 43F8&9 (inshore)

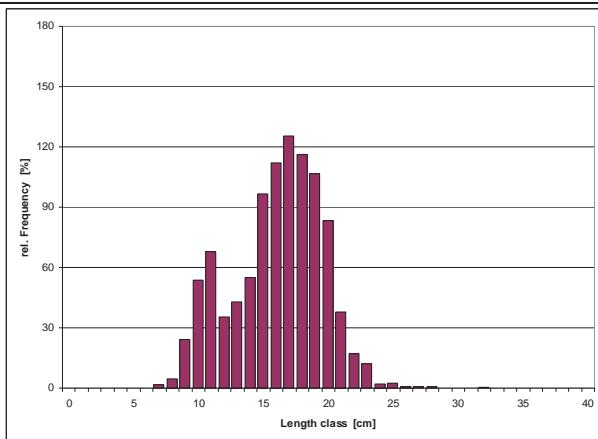


Fig. 4: Length distribution of Dab in 39-43F4&5

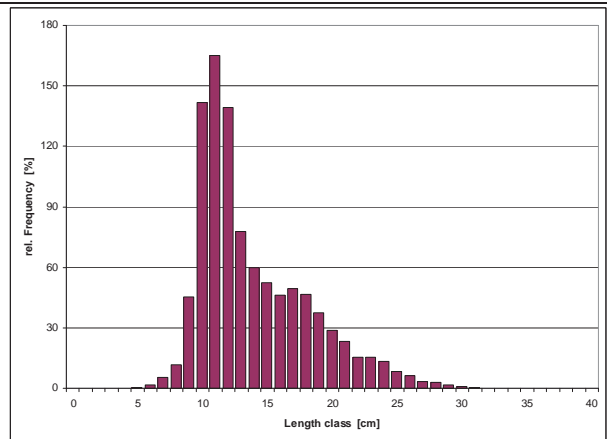


Fig. 5: Length distribution of Dab in 39-43F6&7, 43F8&9

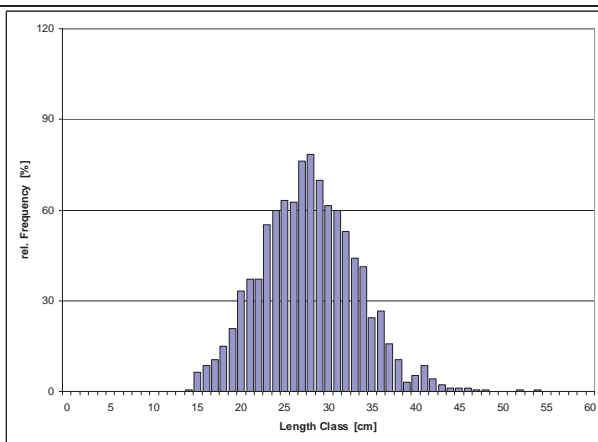


Fig. 6: Length distribution of Plaice in 39-43F4&5

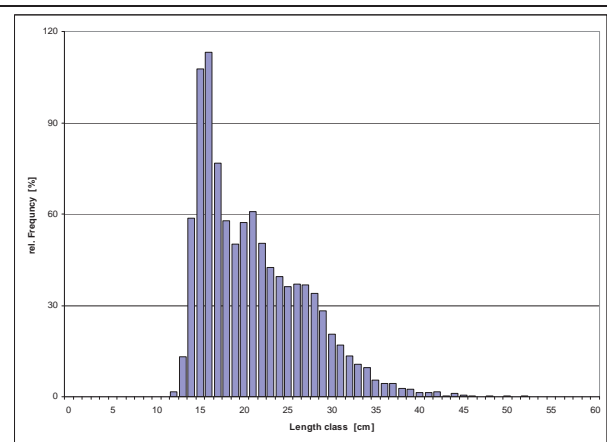


Fig. 7: Length distribution of Plaice in 39-43F6&7, 43F8&9