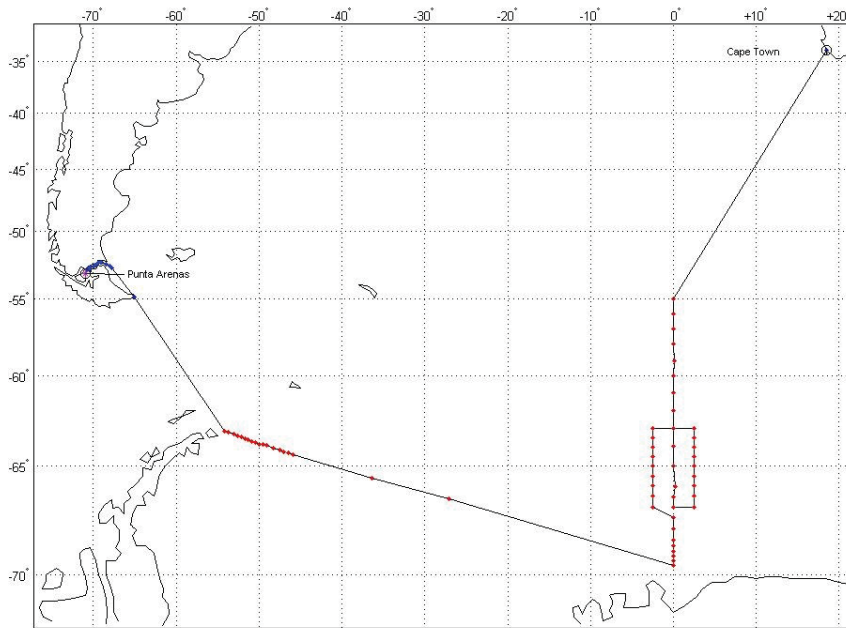
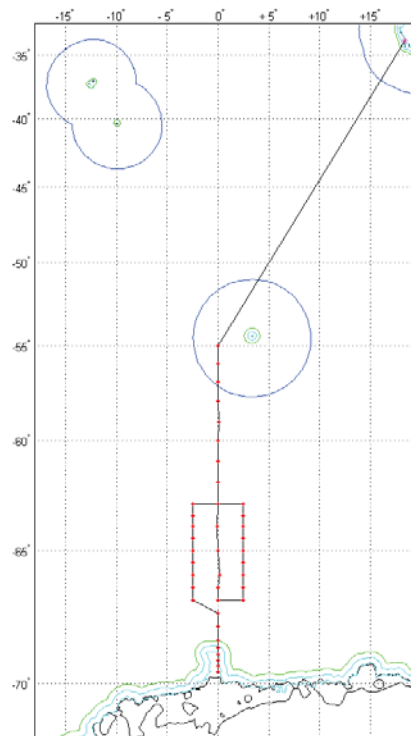


Attachment I. (maps)



Map 1: Planned cruise track from Cape Town to Antarctica (partly along the Greenwich Meridian), followed by a crossing of the Weddell Sea to King George Island and a transit from there to Punta Arenas. The red dots indicate field work (oceanic and ice stations).



Map 2: Oceanographic station work near Bouvet Island.