

**„SOLEA“**  
**Cruise 609 REPORT**  
**14.08. - 26.08.2009**

## **Personnel**

<b>Name</b>	<b>Institution</b>
Kay Panten	SF
Thomas Kehlert	SF
Christine Petersen-Frey	SF
Alissa Brozzo	SF
Florian Krau	SF
Michael Weinert	SF
Birger Kreutz	Multimar

## **Objectives**

1. To participate in the ICES co-ordinated "International **Beam Trawl Survey**" in the North Sea
2. Biological monitoring of the fish fauna in proposed FFH protected areas in the German Bight
3. Distribution of temperature and salinity in the area of investigation

## **Narrative (Fig. 1)**

The port of Cuxhaven was left on 14.8., steaming over night with strong west wind to the area scheduled for the Beam Trawl Survey west of Sylt, north of the Danish border (ca. 55°N). The following days the offshore stations were sampled from south to north, while the inshore stations were investigated from north to south. On August 24 the BTS was interrupted in Esbjerg Harbour for a staff exchange and the unloading of the aquarium stock. Back at sea technical problems at the engine urged slightly premature end of the cruise. The FFH monitoring at "Sylter Außenriff", "Dogger Tail End" and "Borkum Riffgrund" can't carried out this year. The cruise ended in Cuxhaven on 26.8.

## **Results (Fig. 2 – 7)**

A total of 56 half an hour and valid hauls were made using the 7m beam trawl. At 56 stations salinity and temperature were measured.

The species composition distribution showed the usual geographic pattern with dab as the most frequent fish, followed by plaice.

Toward the north and the west soon the importance of long rough dab and starry ray in the biomass increases. Still, in the survey area some larger (up to 50 cm) plaice can be found, although quite sporadically.

A handwritten signature in black ink, appearing to read 'K. Panten', with a long, sweeping horizontal stroke at the end.

Dipl.-Biol. K. Panten

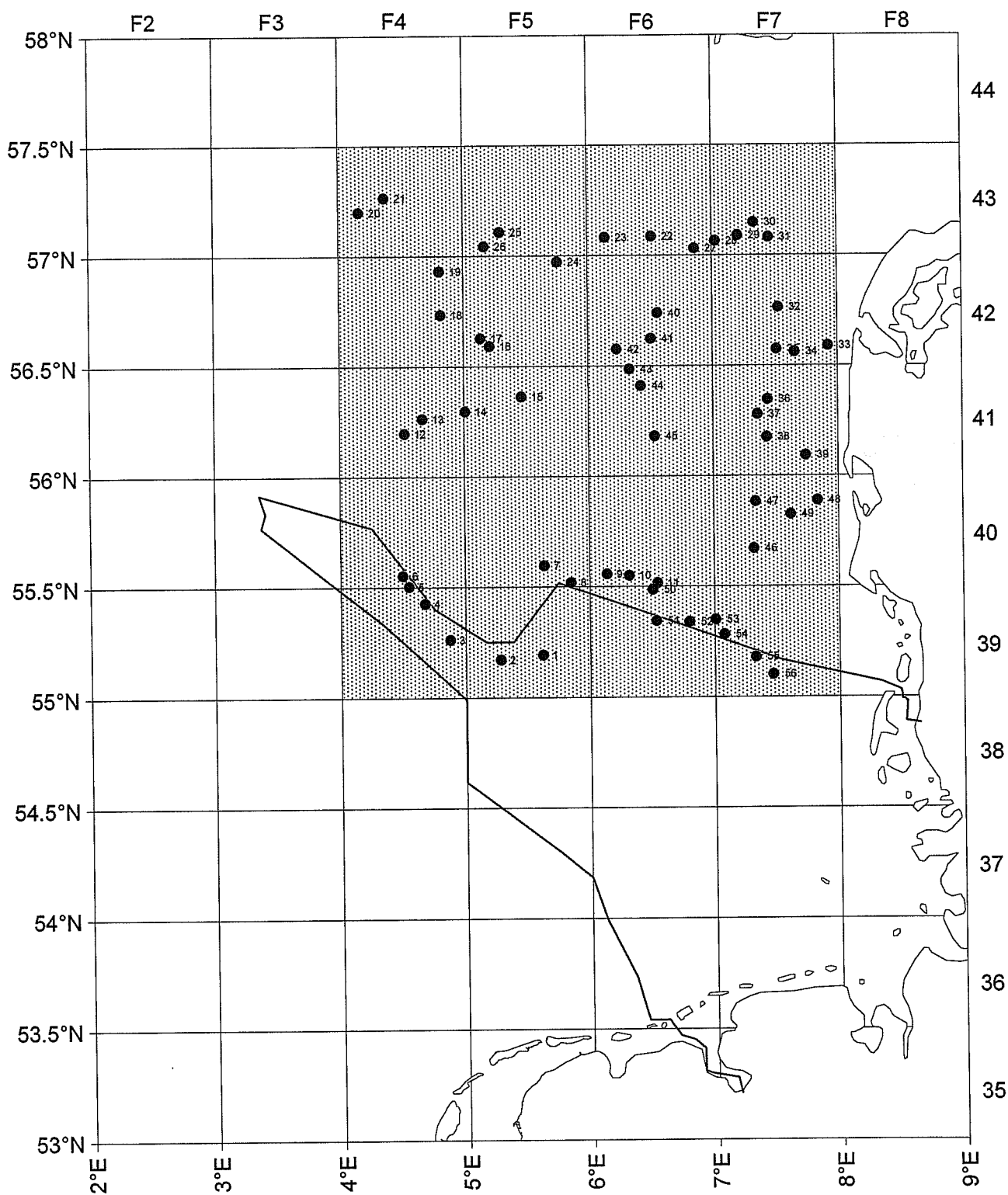
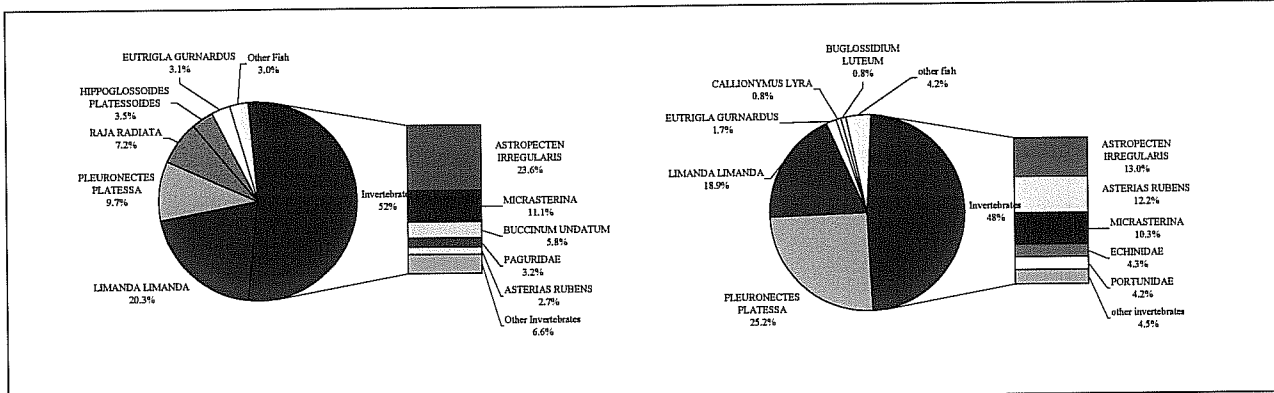


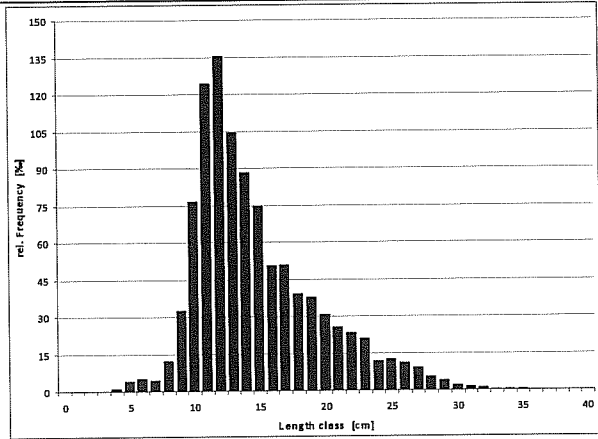
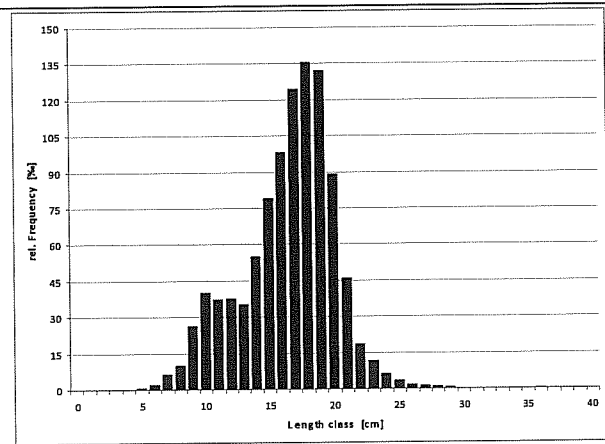
Fig. 1: "Solea", Cruise no. 609 , Haul positions and area of investigation

# Catch composition and length distribution during Beam Trawl Survey



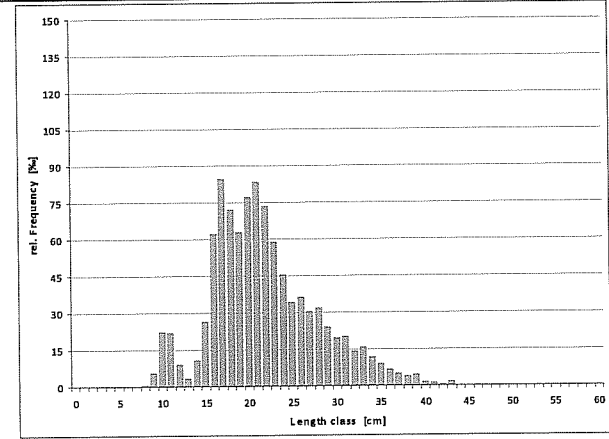
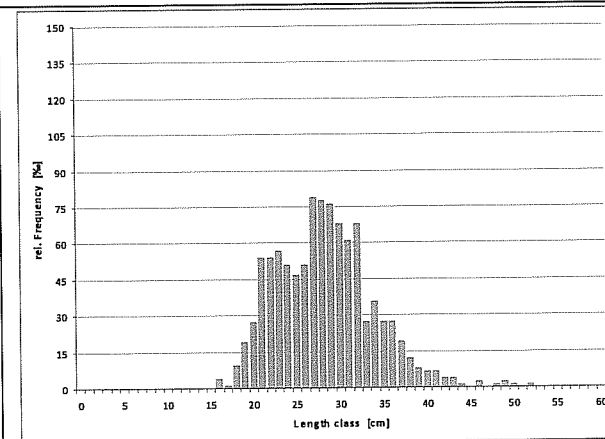
**Fig. 2: Catch composition in 39-43F4&5 (offshore)**

**Fig. 3: Catch composition in 39-43F6&7 (inshore)**



**Fig. 4: Length distribution of Dab in 39-43F4&5**

**Fig. 5: Length distribution of Dab in 39-43F6&7**



**Fig. 6: Length distribution of Plaice in 39-43F4&5**

**Fig. 7: Length distribution of Plaice in 39-43F6&7**