

NB IF ANY DETAILS ARE MATERIALLY CHANGED REGARDING DATES/AREA OF OPERATION AFTER THIS FORM HAS BEEN SUBMITTED, THE COASTAL STATE AUTHORITIES MUST BE NOTIFIED IMMEDIATELY

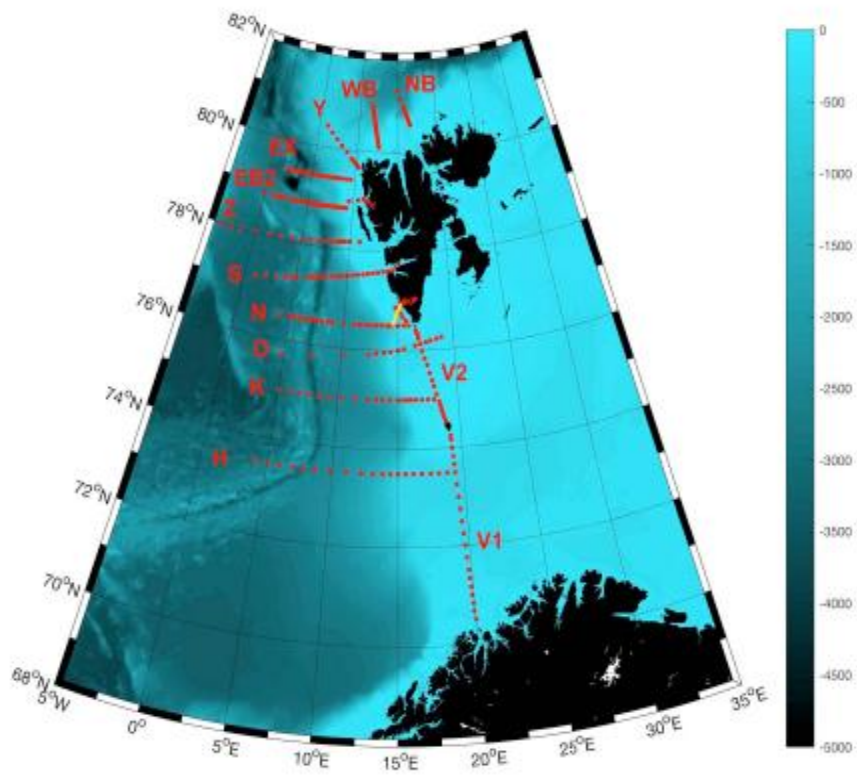


Fig. 1 The planned stations grid during AREX2018 expedition.

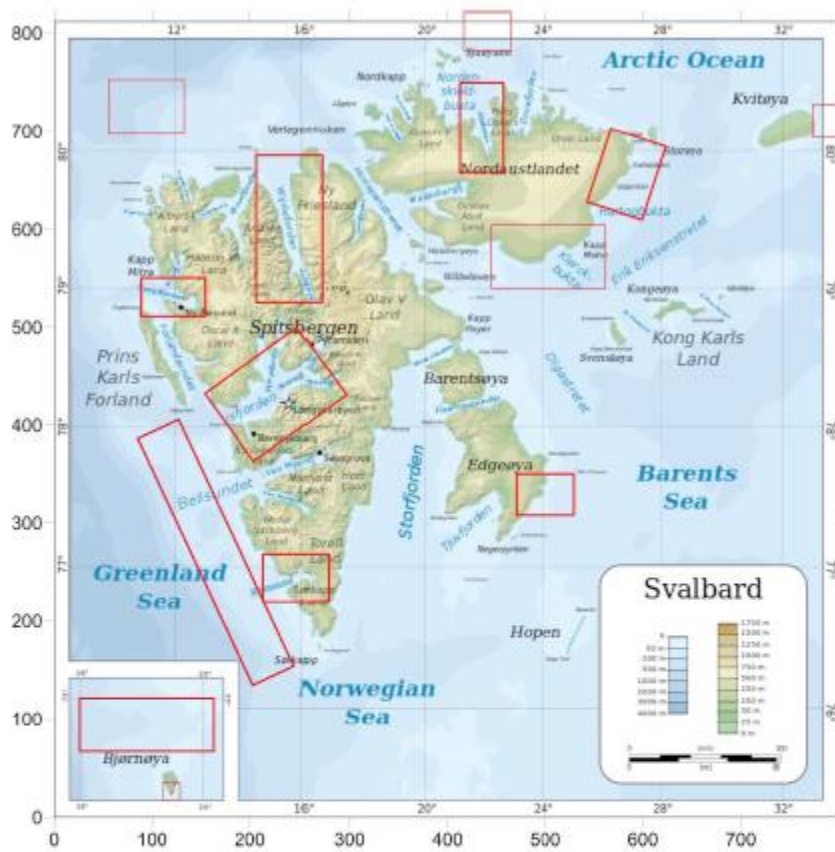


Fig. 2. Research regions in the Svalbard fjords and coastal regions.

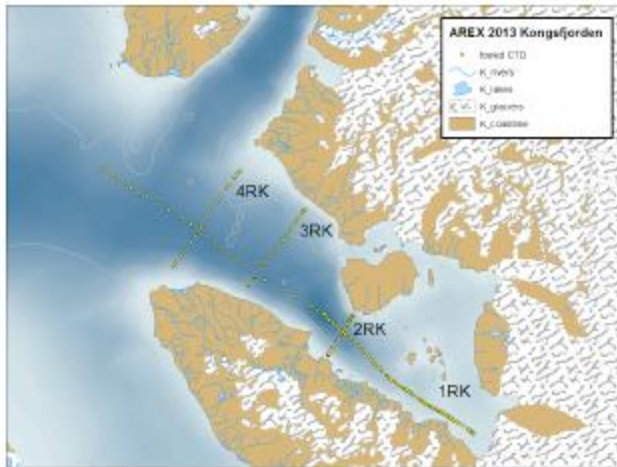


Fig 3. Planned CTD sections in Kongsfjorden

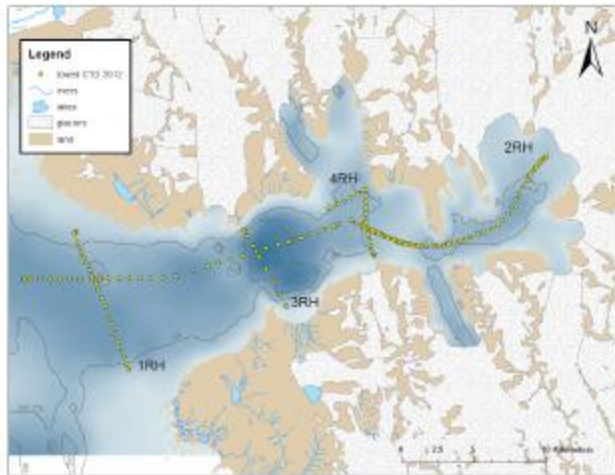


Fig 4. Planned CTD sections in Homsund



Fig 5. Planned stations of benthos samples in Hørsund



Fig 6. Planned stations of benthos samples in Isfjorden



Fig 7. Planned stations of benthos samples in Kongsfjorden

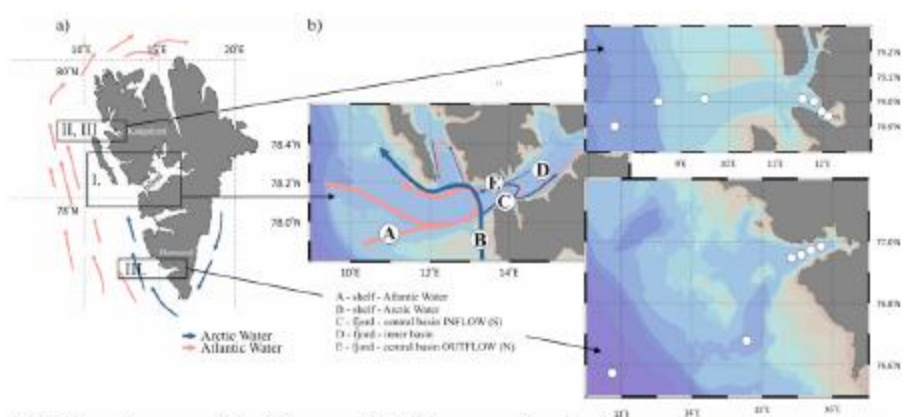


Fig 8. Overview map of the study area of Tax4Fun research project

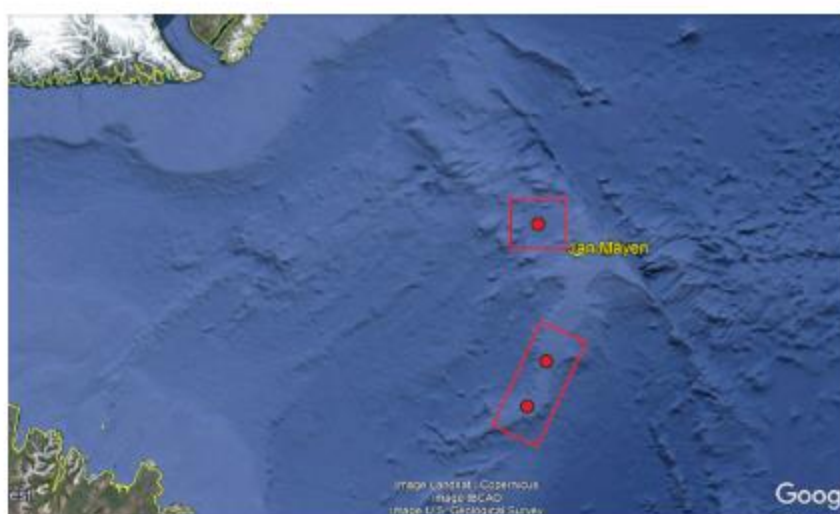


Fig 9. Planned region of paleoceanographic study at the Jan Mayen ridges

Positions of planned paleoceanographic stations in the Jan Mayen area:

70 55.354N  
10 20.120W

70 5.70N  
8 145.889W

69 5.337N  
8 1.509W